

Rail Asset Management Summit

.....

2018

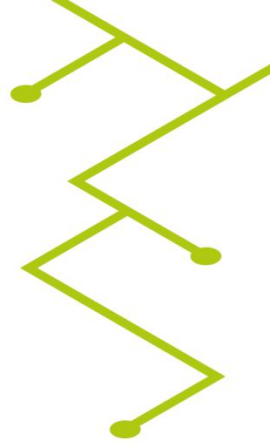
Jon Jarrett

Head of Infrastructure Crossrail
(Elizabeth Line)

Rail for London Infrastructure Ltd



People our greatest Asset!!



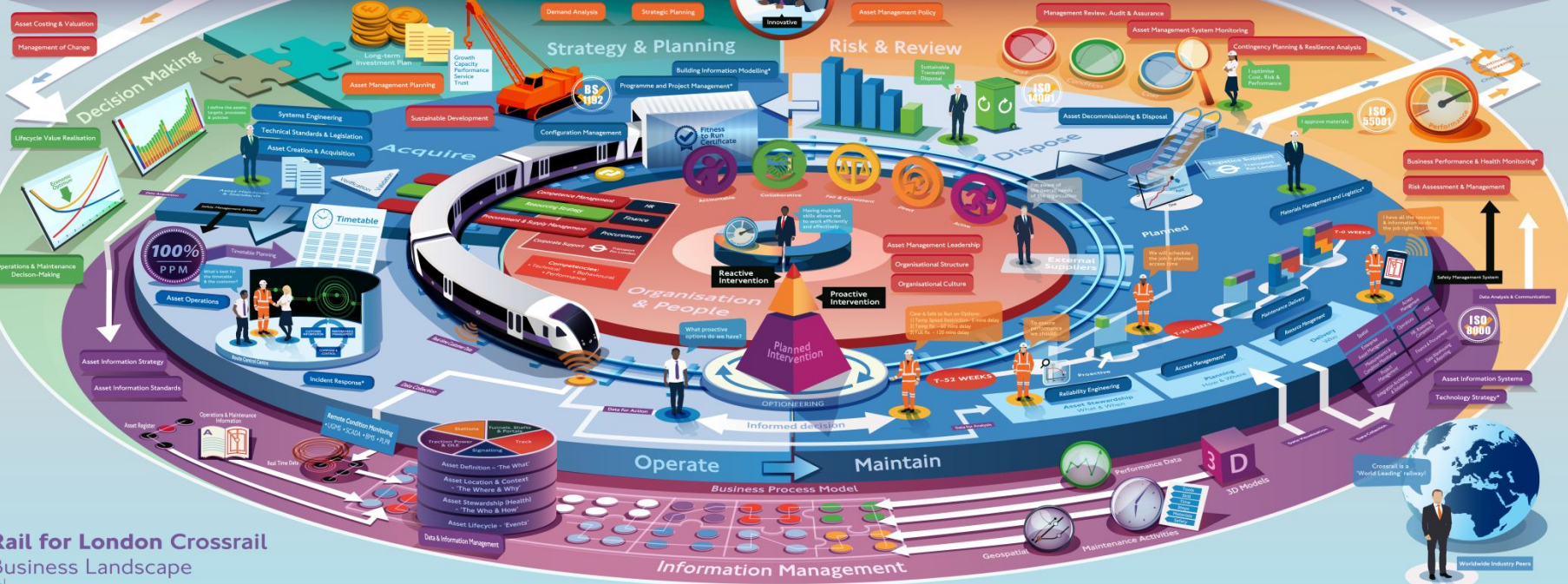
Transport For London Objectives

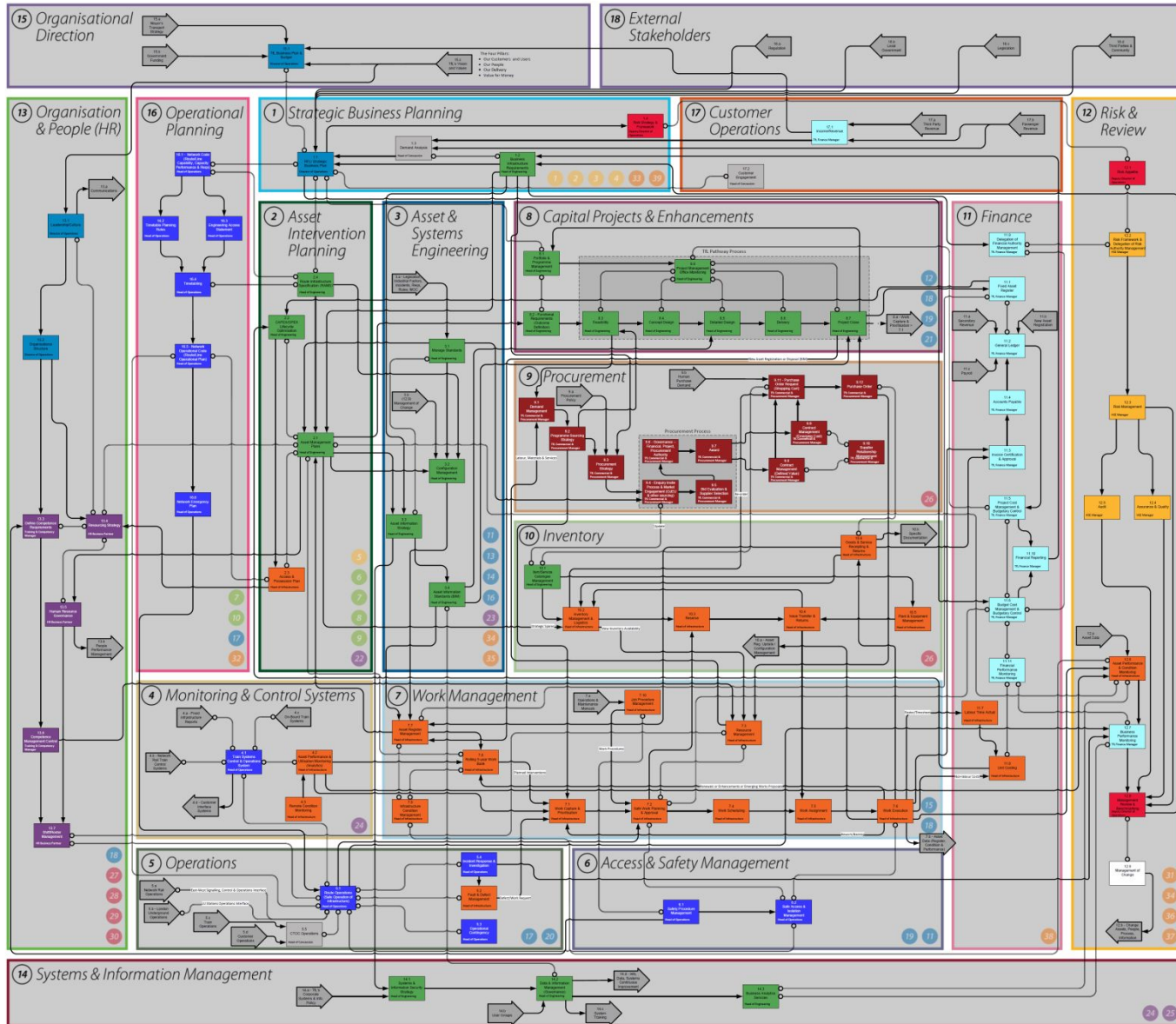


An Informed Customer



RfL Crossrail Strategy



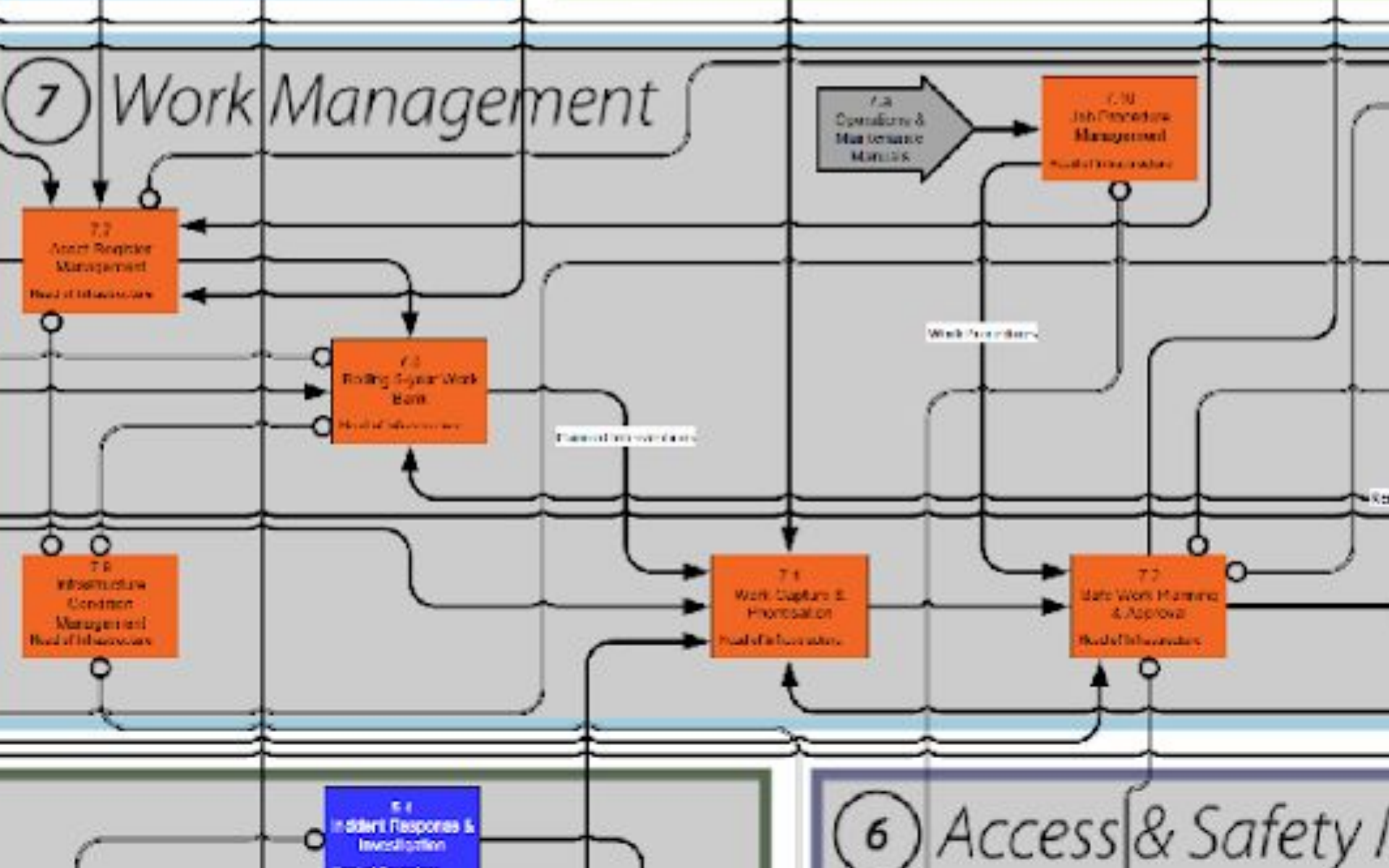


GFMAM 39 Subjects Key

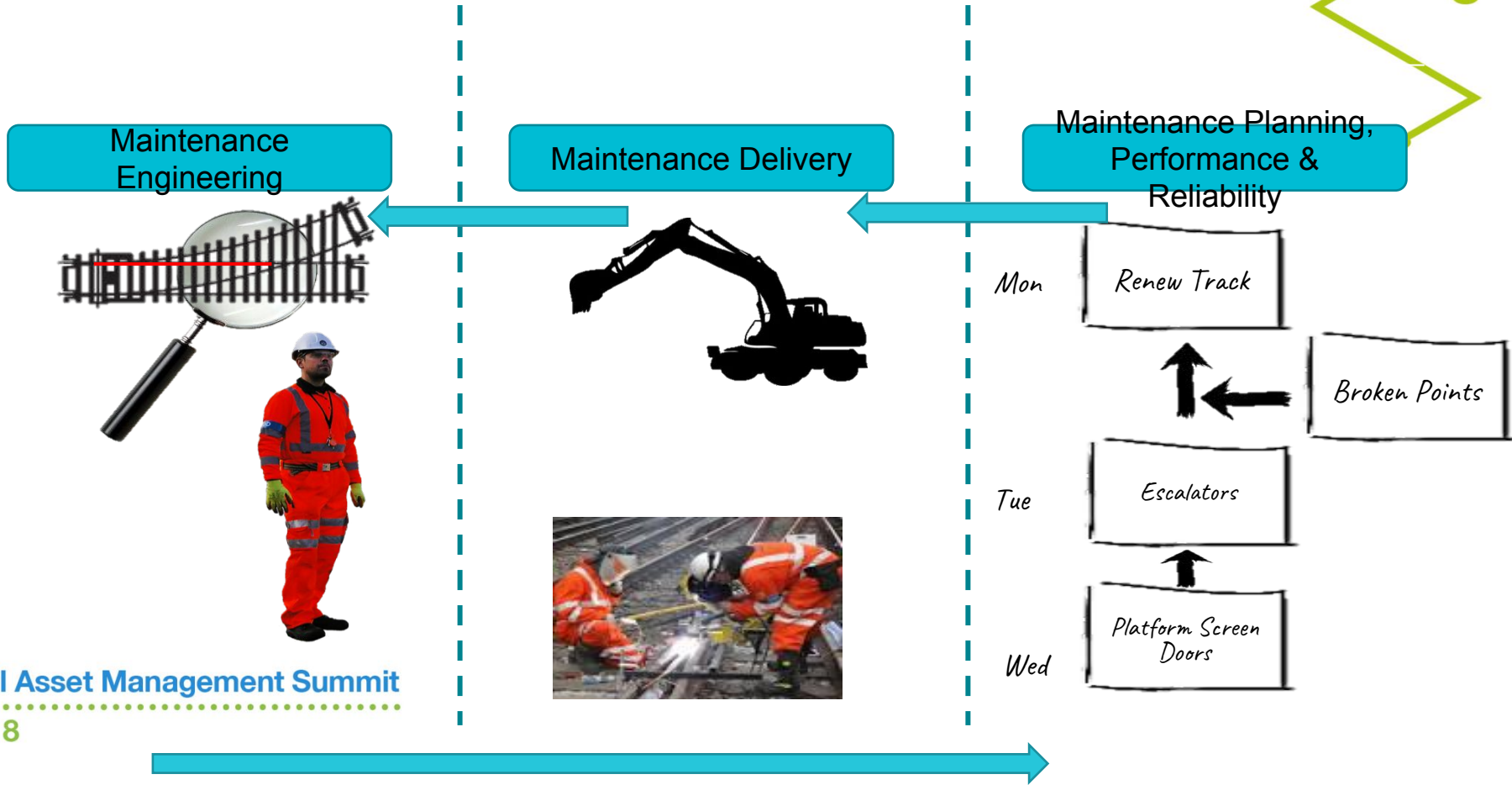
- 1 Asset Management Policy
- 2 Asset Management Strategy & Objectives
- 3 Demand Analysis
- 4 Strategic Planning
- 5 Asset Management Planning
- 6 Capital Investment Decision-Making
- 7 Operations & Maintenance Decision-Making
- 8 Lifecycle Value Realisation
- 9 Resourcing Strategy
- 10 Shutdown & Outage Strategy
- 11 Technical Standards & Legislation
- 12 Asset Creation & Acquisition
- 13 Systems Engineering
- 14 Configuration Management
- 15 Maintenance Delivery
- 16 Reliability Engineering
- 17 Asset Operations
- 18 Resource Management
- 19 Shutdown & Outage Management
- 20 Fault & Incident Response
- 21 Asset Decommissioning & Disposal
- 22 Asset Information Strategy
- 23 Asset Information Standards
- 24 Asset Information Systems
- 25 Data & Information Management
- 26 Procurement & Supply Chain Management
- 27 Asset Management Leadership
- 28 Organisational Structure
- 29 Organisational Culture
- 30 Competence Management
- 31 Risk Assessment & Management
- 32 Contingency Planning & Resilience Analysis
- 33 Sustainable Development
- 34 Management of Change
- 35 Asset Performance & Health Monitoring
- 36 Asset Management System Monitoring
- 37 Management Review, Audit & Assurance
- 38 Asset Costing & Valuation
- 39 Stakeholder Engagement

Accountability Key

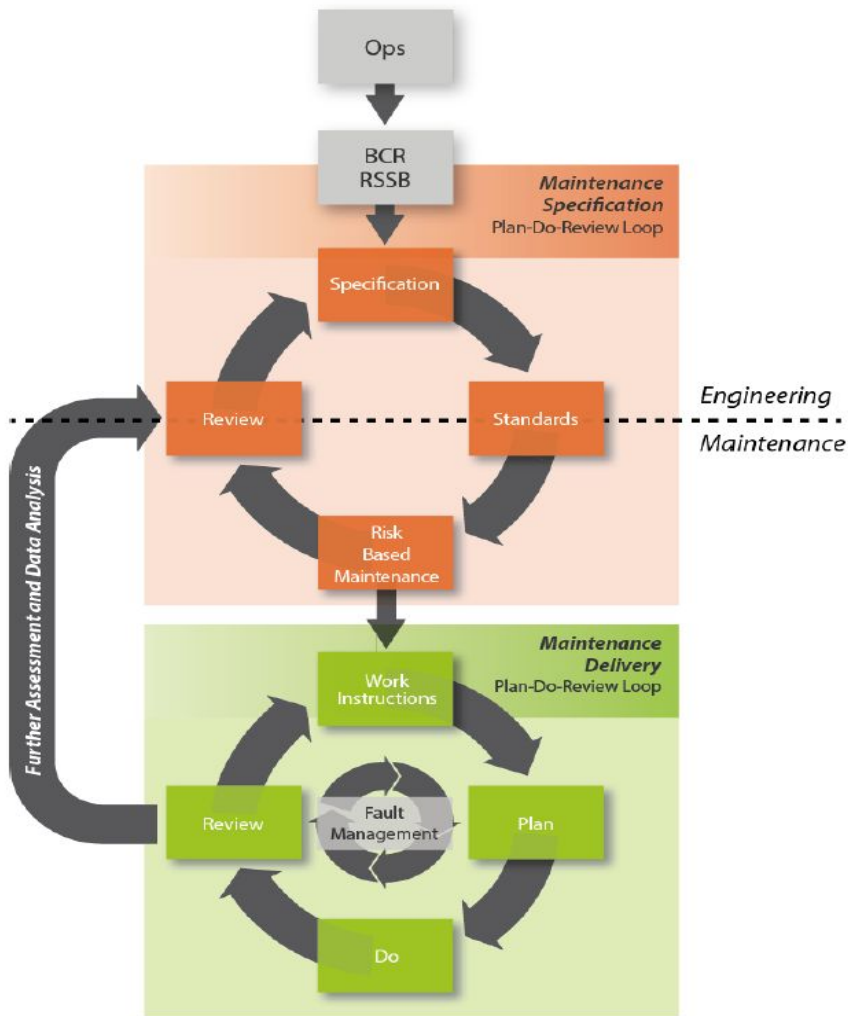
- Deputy Director of Operations
- Director of Operations
- Head of Concession
- Head of Engineering
- Head of Infrastructure
- Head of Operations
- HR Business Partner
- HSE Manager
- TfL Commercial & Procurement Manager
- TfL Finance Manager
- Training & Competency Manager



Maintenance Plan in Action



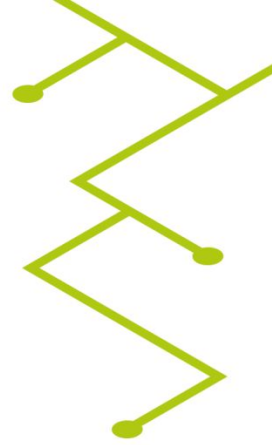
Plan-do-review





Business Critical Rules

Risk based Maintenance



RfL's approach to Risk Based Maintenance will be based on Network Rail's emerging Business Critical Rules (BCR). BCR will provide a framework to encourage local decision-making by staff who can rely on a supportive culture and on a set of documentation, which clearly summarises mandatory controls and tolerances. The BCR scope stretches beyond assets, incorporating leadership, operations and organisation,



Access

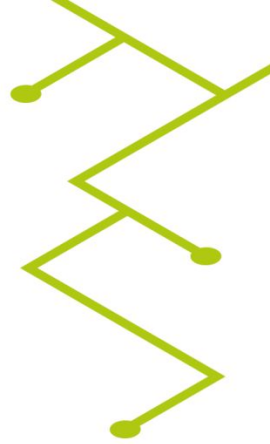
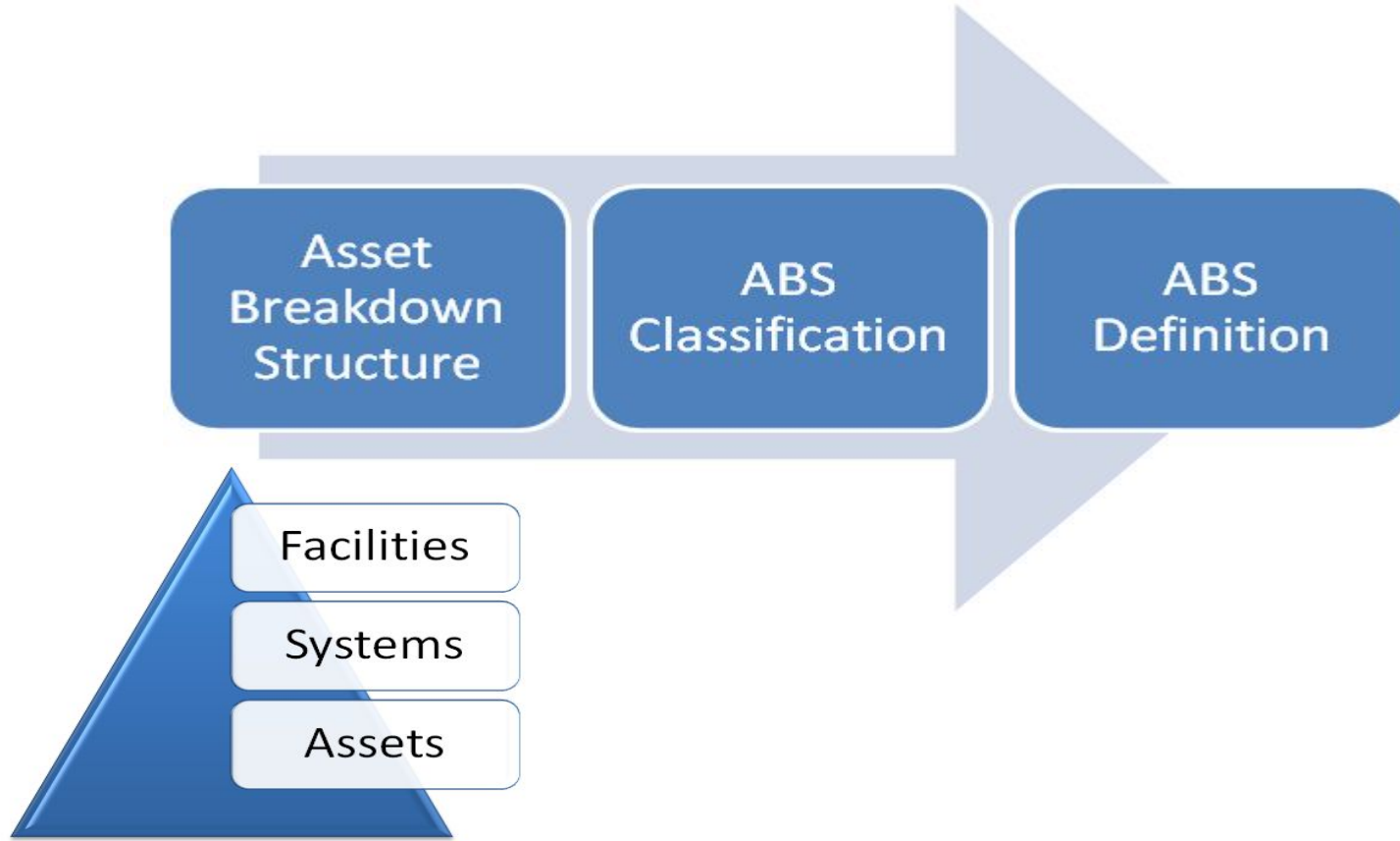
Engineering access being limited to non-operational hours and a maximum of two 56 hour possessions per annum!!

Designed for Risk Based Maintenance

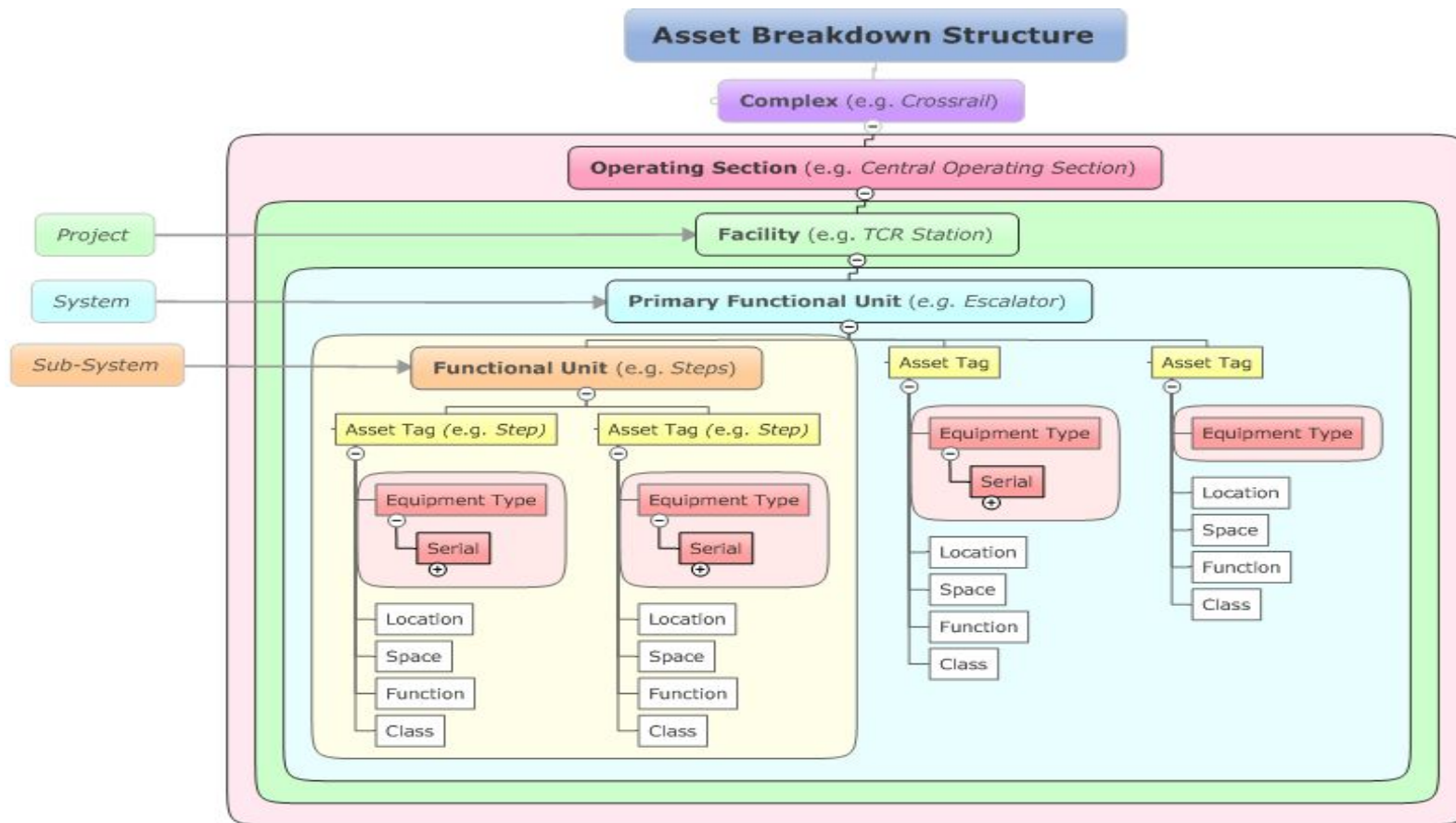
- *RCM*
- *Intelligent Assets*
- *Reliability Centred*

Trend analysis for high volume / verified Infrastructure status recording

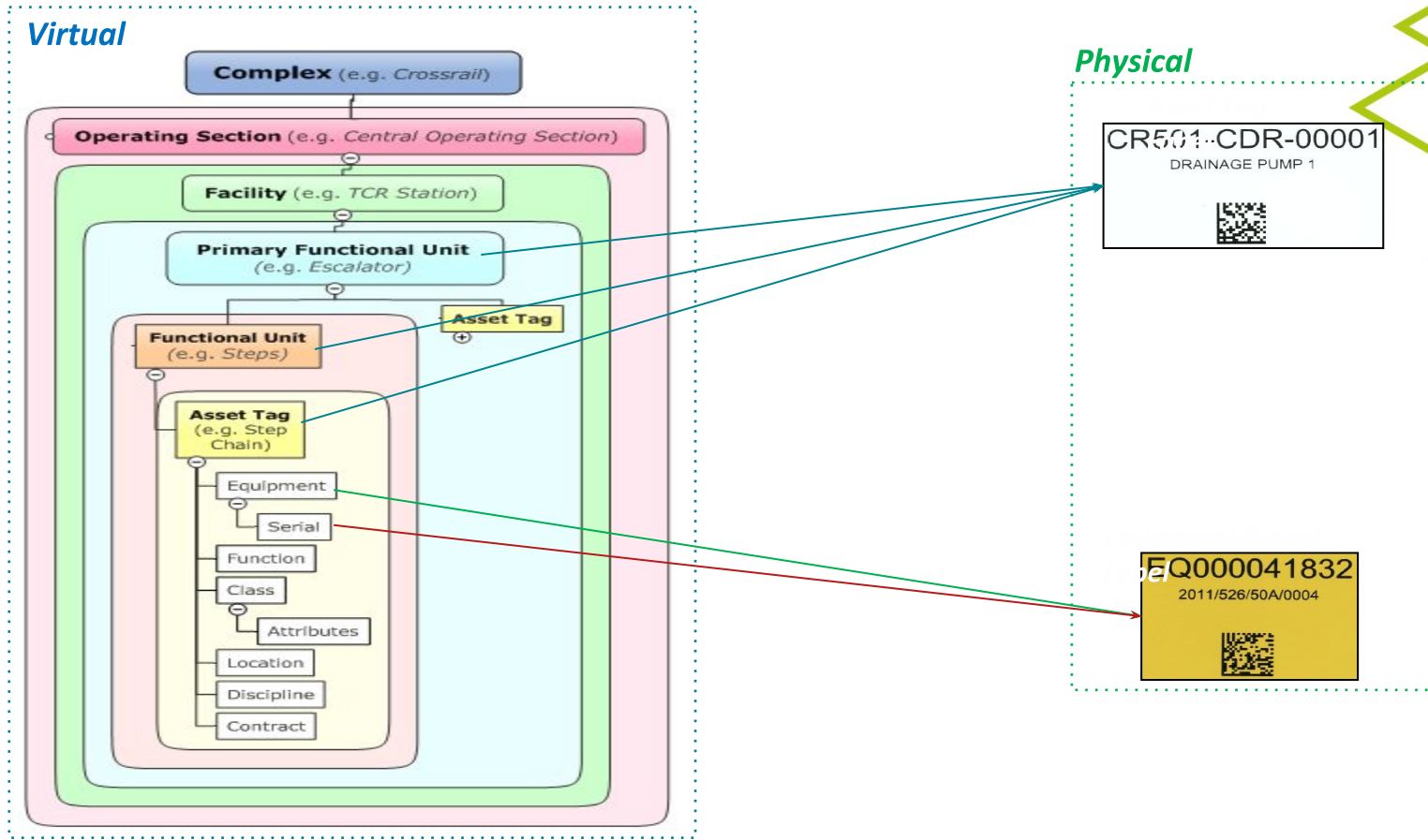
Asset Breakdown



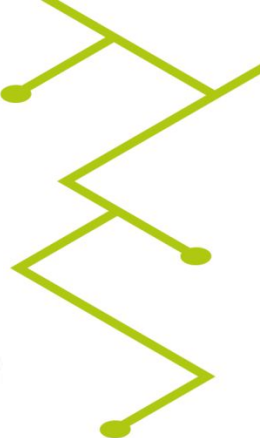
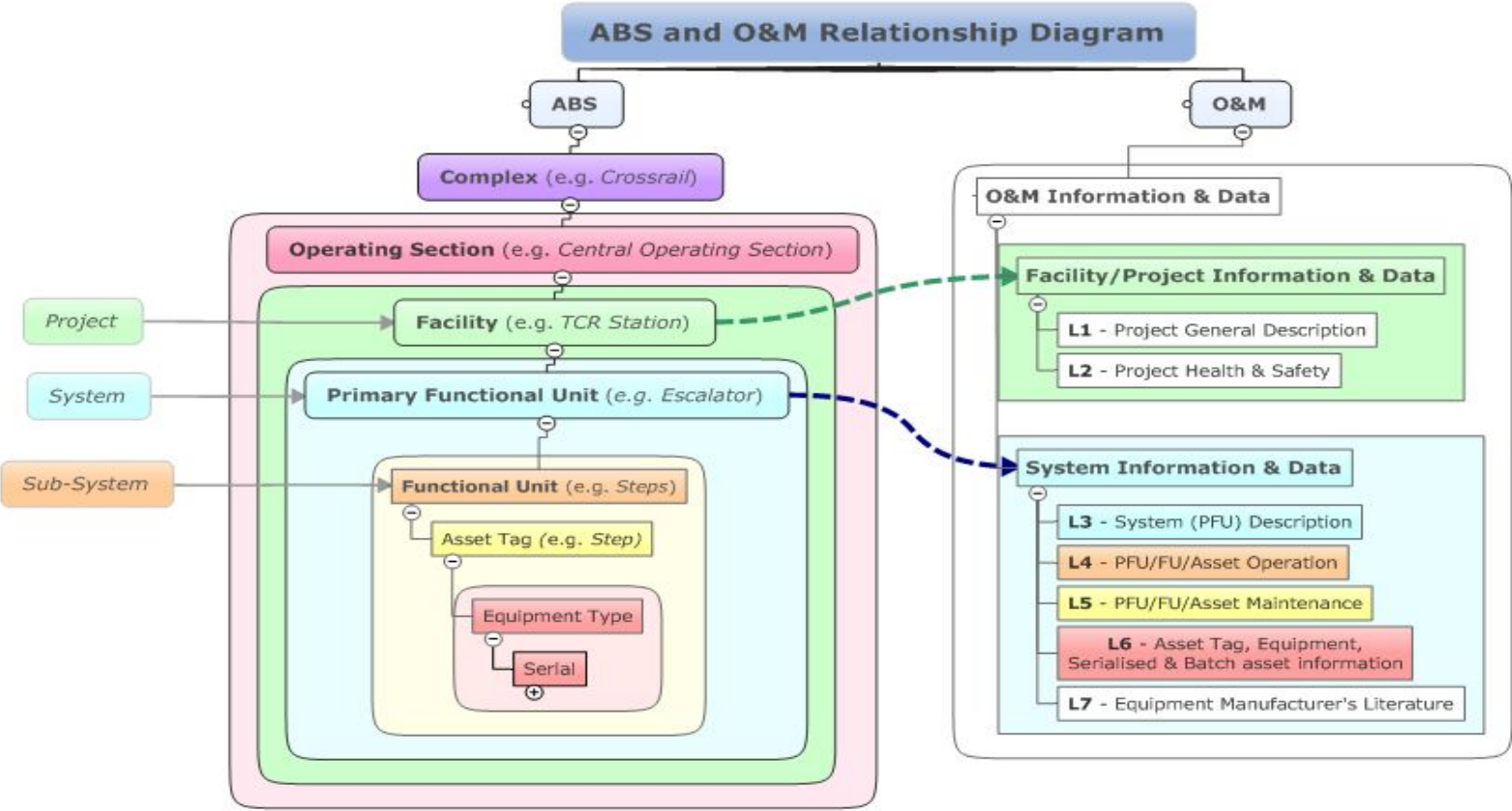
Asset Breakdown Structure



Virtual meets Physical



ABS meets O&M



Systems Delivery

Access Management



Maximo Anywhere



Network Operations Information Systems



Enterprise Content Management



IBM
MAXIMO
Crossrail Enterprise Asset Management System

Competency Management



Comms Portal



TfL Core Network + Wi-Fi



Procurement & Logistics



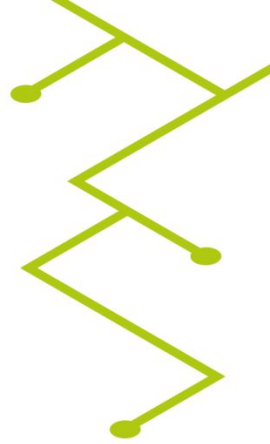
SAP
SAP (HR and Finance for RfL I)



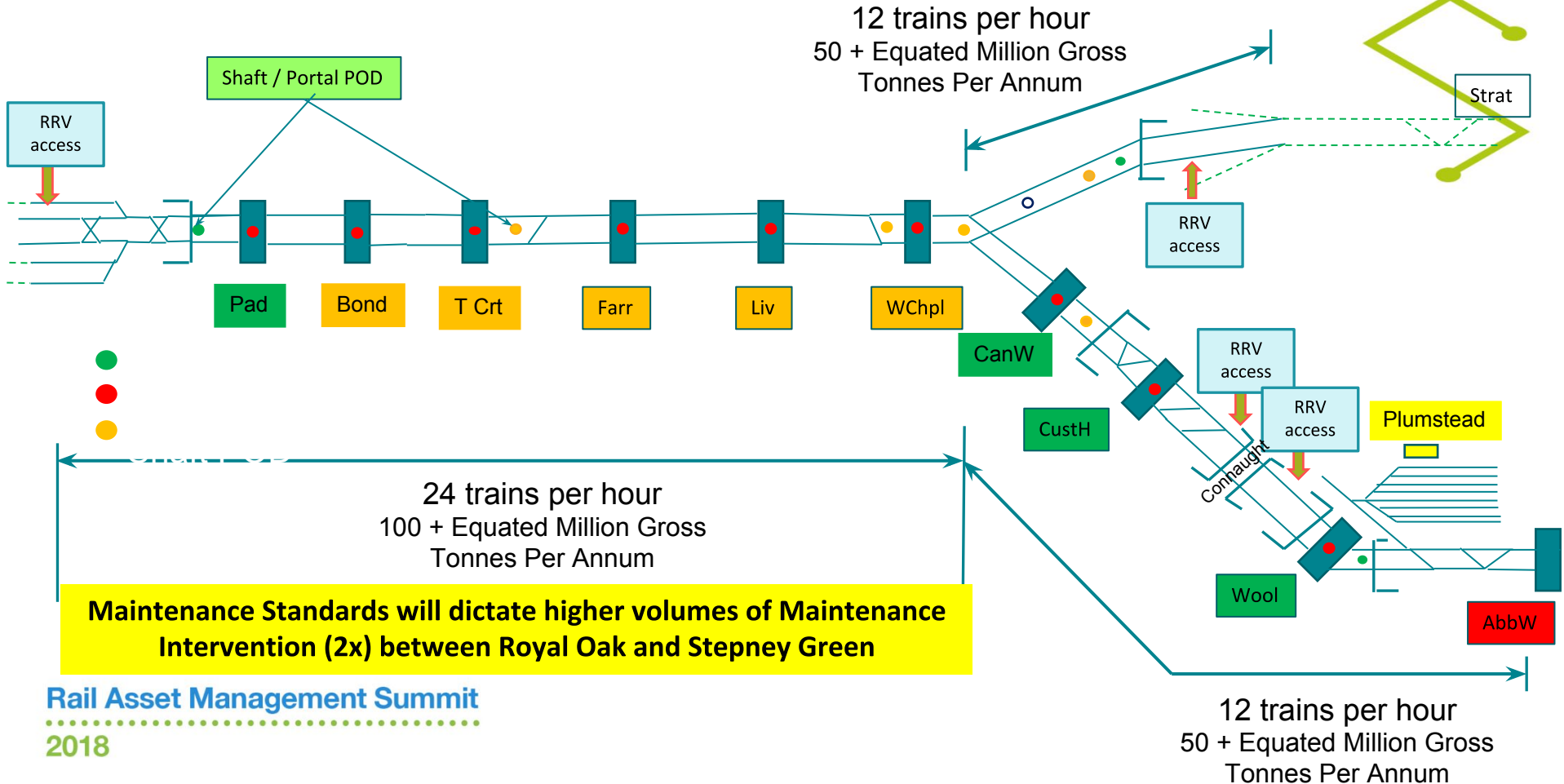
Systems Integration



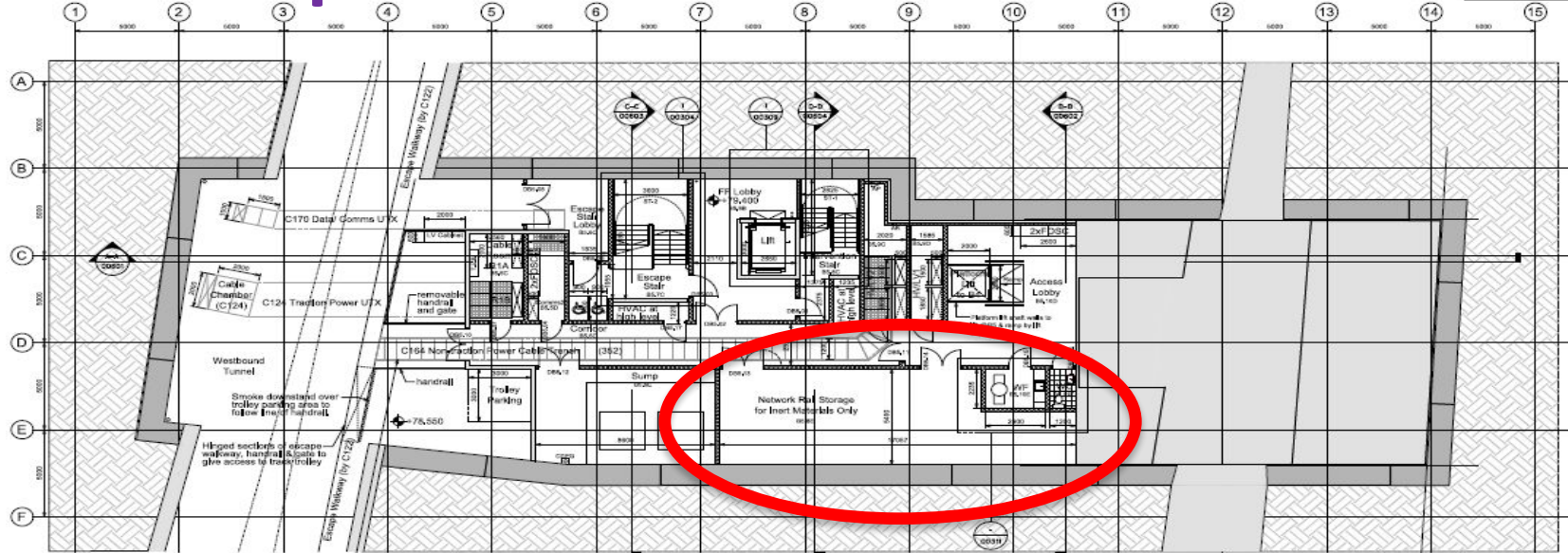
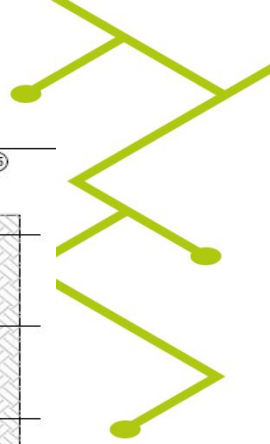
Maintenance PODs



POD Provision Plan



POD Specification



Ultimate Goal.....



Infrastructure that manages itself: intelligent, autonomous, predictive; requiring minimal human intervention, through good asset design and integration of high performing maintenance equipment / systems / techniques